



2015 ANNUAL REPORT

CROSSING *the*
THRESHOLD

THE **LGBT**
BAR



DEAREST FRIENDS;

Sometimes I get caught up in the hectic pace of day-to-day life at the LGBT Bar and forget to appreciate the scope of what we have accomplished as a movement, as a community, and as a nation.

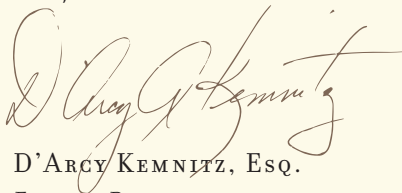
As we know, attaining marriage equality for our families this year was the culmination of decades of hectic frenzied days, sleepless nights, and thousands of unbilled hours. The marriage victory was hard-fought and now it is ours to have and to hold. But, as we walk across the threshold of this newly-opened door, we find many doors remain closed. Our community still faces discrimination in employment and in housing, and our country is racked with violence and racial injustice.

This annual report gives us the chance to take stock of our work last year, appreciate our victories, and prepare ourselves for the road ahead.

You will hear directly from our members and supporters about how they view our work. And you will read about our accomplishments, by the numbers. I think our results are impressive and I hope you do, too.

I want to thank our members and sponsors for your financial support and for the work that you do to open doors for all.

Best,



D'ARCY KEMNITZ, ESQ.

Executive Director



“As we know, attaining marriage equality for our families this year was the culmination of decades of hectic frenzied days, sleepless nights, and thousands of unbilled hours. The marriage victory was hard-fought and now it is ours to have and to hold.”

A JOINT MESSAGE FROM
THE PRESIDENT OF THE LGBT BAR ASSOCIATION
AND
THE PRESIDENT OF THE LGBT BAR FOUNDATION

DEAREST DONORS AND FRIENDS,

The work of the Foundation has always been to partner with the Association in order to secure equality for LGBT people through education and community building. Although we do this in a variety of ways, one of the best examples of how we achieve this goal is the Lavender Law® Conference and Career Fair.

As D'Arcy points out, the marriage equality victory last year was won over the course of decades of legal activism by our colleagues, community partners, and friends. We know that many of the best legal minds in our movement have attended Lavender Law year after year to connect, learn from one another, and inspire each other to keep going. Mary Bonauto calls Lavender Law, “a staple in LGBTQ law.”

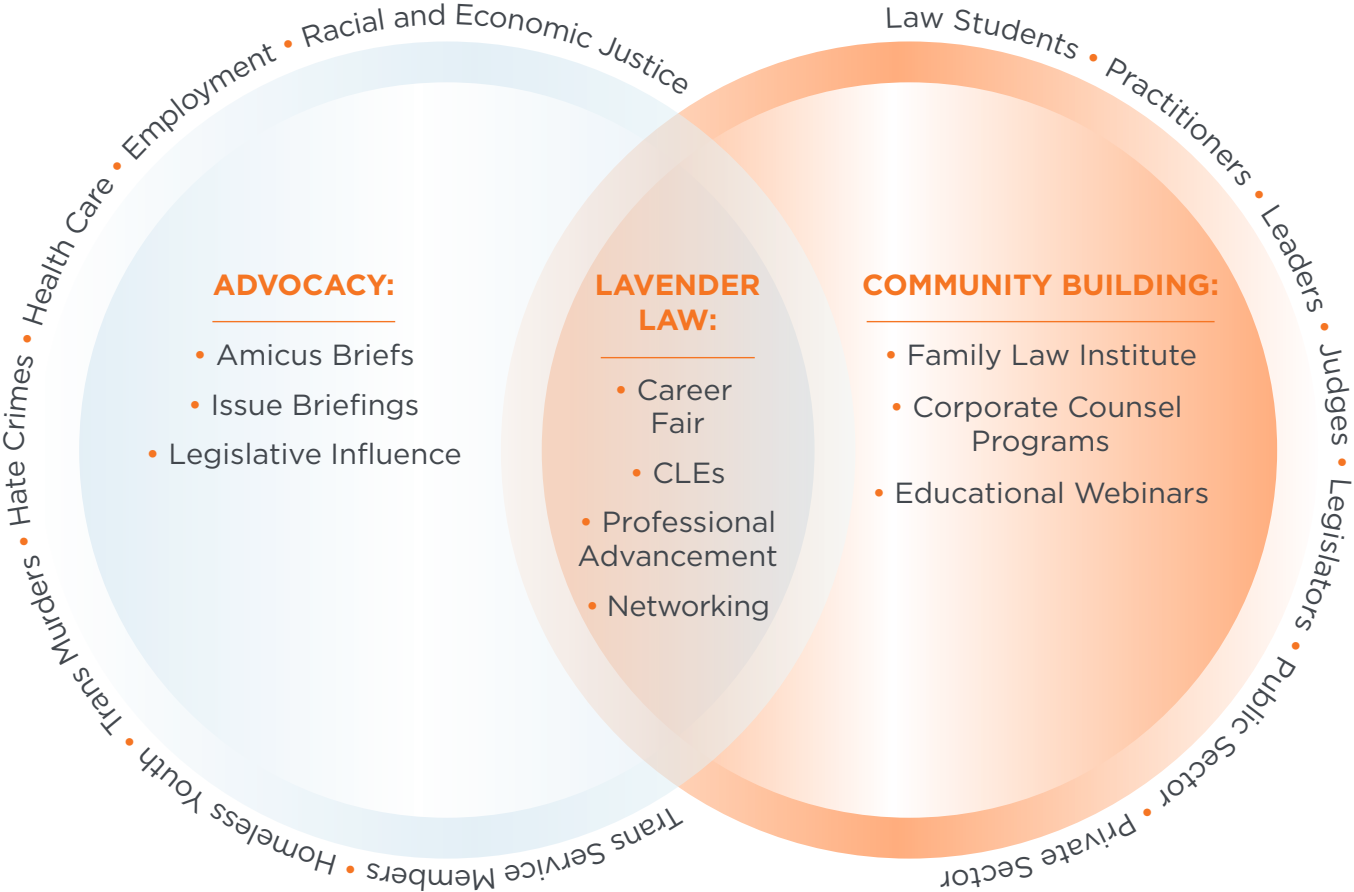
In addition to the Conference, we are very proud of everything we accomplished last year and will continue to push for full equality for all members of our community. We couldn't do it without you, our donors and sponsors; you make Lavender Law and our other important advocacy work possible.

As you read this annual report, I hope you too will be proud of what we have accomplished. Your support of the Bar has made you an intricate part of our movement.

Best,

BRIAN ESSER
President, LGBT Bar Foundation
and
JEREMY PROTAS
President, LGBT Bar Association

OUR PROGRAMS

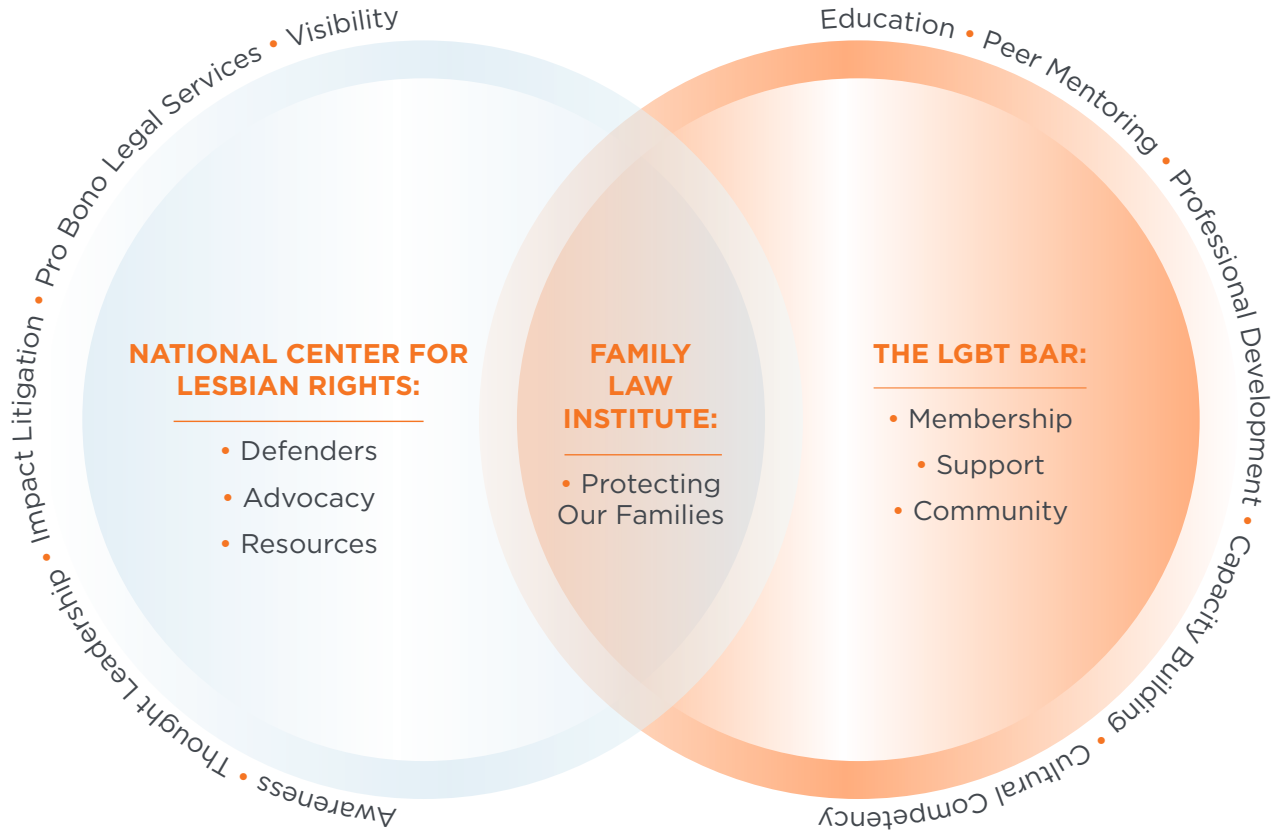


“Lavender Law is a national treasure. It is the only national legal conference that focuses exclusively on supporting LGBTQ and LGBTQ-supportive lawyers and highlighting the legal issues affecting LGBTQ people.”

– MARY BONAUTO
Civil Rights Project Director, GLBTQ Legal Advocates and Defenders (GLAD)

COLLABORATION AND MEMBER SERVICES: SPOTLIGHT ON THE FAMILY LAW INSTITUTE

The LGBT Family Law Institute (FLI) is an ever-expanding member group and joint project between the LGBT Bar and the National Center for Lesbian Rights. Members of FLI come from nearly every state in the country and are now expanding globally. Meetings have been hosted in the United Kingdom and will be hosted soon in Australia and Canada.



“Through its sponsorship of the Family and Transgender Law Institutes, the National LGBT Bar Association provides a unique forum for practitioners and scholars across the country to share cutting-edge strategies and to forge professional networks that are helping to transform the law in these critical areas. These institutes provide invaluable resources for both experts and beginners and have enabled hundreds of participants to improve their services to individual clients and to be catalysts for change in their communities.”

– SHANNON MINTER
Legal Director, National Center for Lesbian Rights

STRENGTH IN NUMBERS 2015



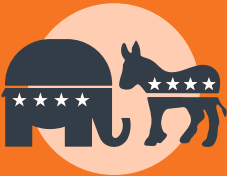
2,000 ATTENDEES
AT OUR EXCLUSIVE NETWORKING
AND V.I.P. EVENTS



400 LAW STUDENTS
WHO ACCESSED OUR
2015 CAREER FAIR



6,300 VIEWS
ON OUR ACTIVISM WIN FOR
TRANSGENDER VETERANS



32 BI-PARTISAN
CO-SPONSORS FOR LEGISLATION
AGAINST JURORS DISCRIMINATION



5,500 VIEWS
OF OUR 2015
LAVENDER LAW VIDEO



1 AMAZING YEAR
OF RAISING THE BAR FOR OUR
COMMUNITY AND OUR PROFESSION

**THE NATIONAL LESBIAN AND GAY LAW ASSOCIATION
STATEMENT OF FINANCIAL POSITION**

June 30, 2015

ASSETS

Current Assets

Cash and cash equivalents	\$58,488
Investments	138,203
Accounts receivable	1,572
Prepaid expenses	2,043

TOTAL CURRENT ASSETS 200,306

Investments, Deferred Compensation 6,408

PROPERTY AND EQUIPMENT

Furniture and equipment	1,557
Less accumulated depreciation	(1,142)
Total Property and Equipment	415

TOTAL ASSETS \$207,129

LIABILITIES AND NET ASSETS

Current Liabilities

Due to the Foundation	\$27,600
Deferred revenue	44,515
Accrued salaries	8,164

TOTAL CURRENT LIABILITIES 80,279

Deferred Compensation Payable 6,408

NET ASSETS

Unrestricted 120,442

TOTAL NET ASSETS 120,442

TOTAL LIABILITIES AND NET ASSETS \$207,129

**THE NATIONAL LESBIAN AND GAY LAW ASSOCIATION
STATEMENT OF ACTIVITIES FOR THE YEAR ENDED
JUNE 30, 2015**

REVENUE

Membership dues	\$101,847	50%
Licensing agreement revenue	71,454	35%
Donated office space	10,612	5%
Investment income	347	0.17%
Other income	20,724	10%

TOTAL REVENUE 204,984 100%

EXPENSES

Program Services:

American Bar Association	19,347	11%
Member services	60,771	35%
Outreach services	58,051	34%
Total Program Services	138,169	80%
Management and general	34,298	20%

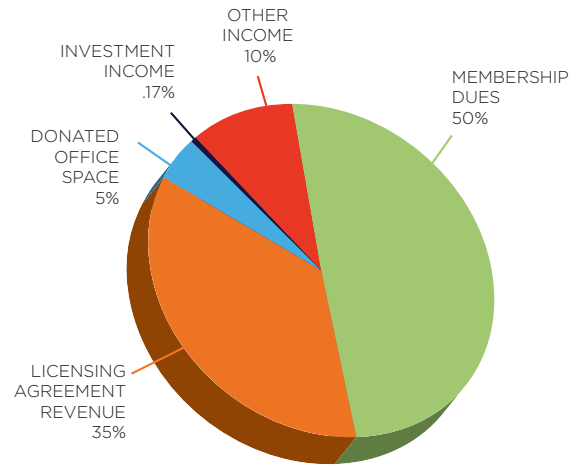
TOTAL EXPENSES 172,467 100%

Change in Net Assets 32,517

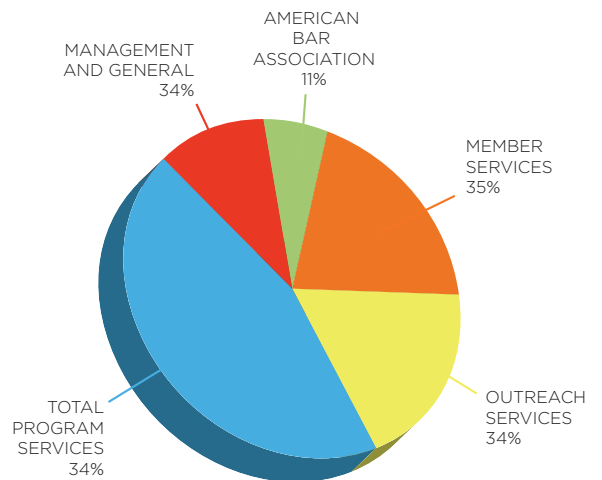
NET ASSETS, BEGINNING OF YEAR 87,925

NET ASSETS, END OF YEAR \$120,442

REVENUE



EXPENSES



“BMW’s support for the LGBT Bar makes sense; we share a dedication to innovation, intelligent design, and dynamic programs.”

– KENN SPARKS
U.S. Business Spokesperson, BMW Group

**THE NATIONAL LESBIAN AND GAY LAW FOUNDATION
STATEMENT OF FINANCIAL POSITION**

June 30, 2015

ASSETS

Current Assets

Cash and cash equivalents	\$526,062
Investments	863,203
Accounts receivable	109,410
Due from NLGA	27,600
Prepaid expenses	46,373

TOTAL CURRENT ASSETS 1,572,648

INVESTMENTS, DEFERRED COMPENSATION 19,224

PROPERTY AND EQUIPMENT

Furniture and equipment	7,346
Less accumulated depreciation	(6,102)

TOTAL PROPERTY AND EQUIPMENT 1,244

TOTAL ASSETS \$1,593,116

LIABILITIES AND NET ASSETS

CURRENT LIABILITIES

Accounts payable and accrued liabilities	\$59,810
Deferred revenue	771,818

TOTAL CURRENT LIABILITIES 831,628

DEFERRED COMPENSATION PAYABLE 19,224

NET ASSETS

Unrestricted	742,264
Temporarily restricted	-
Total Net Assets	742,264

TOTAL LIABILITIES AND NET ASSETS \$1,593,116

**THE NATIONAL LESBIAN AND GAY LAW FOUNDATION
STATEMENT OF ACTIVITIES FOR THE YEAR ENDED
JUNE 30, 2015**

REVENUE

Sponsorships	\$969,144	61%
Conference registration	210,924	13%
Corporation counsel ticket sales	62,227	4%
Individual contributions	26,745	2%
Grants	13,600	1%
Donated office space	284,740	18%
Investment income	1,360	0.09%
Other income	8,420	1%
Releases from restrictions	8,845	1%

TOTAL REVENUE 1,586,005 100%

EXPENSES

Program Services:

Speaking/Outreach Services	237,137	16%
Annual Conference and Career Fair	1,022,533	69%
Advocacy	3,600	0%
Tax Equity Project	13,845	1%

TOTAL PROGRAM SERVICES 1,277,115 87%

Supporting Services

Fundraising	47,680	3%
Management and general	149,941	10%

TOTAL SUPPORTING SERVICES 197,621 13%

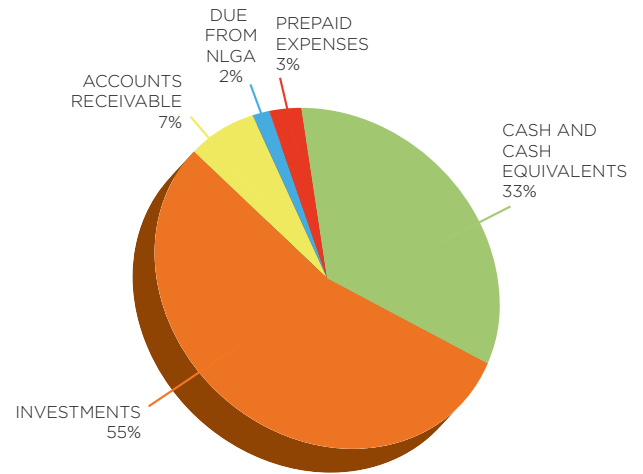
TOTAL EXPENSES 1,474,736 100%

Change in Net Assets 111,269

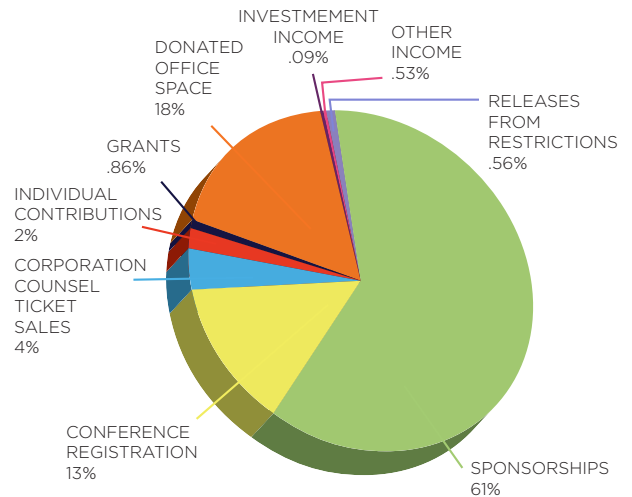
NET ASSETS, BEGINNING OF YEAR 630,995

NET ASSETS, END OF YEAR \$742,264

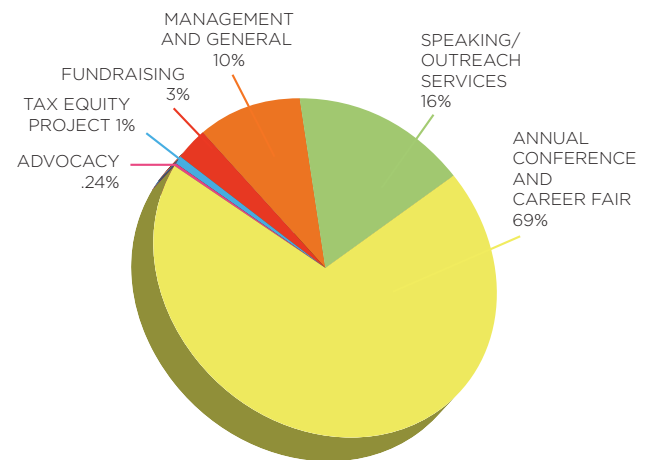
ASSETS



REVENUE



EXPENSES



2015 SPONSOR LIST

Akin Gump Strauss Hauer & Feld LLP	DLA Piper LLP (US)	Littler Mendelson P.C.	Quarles & Brady LLP
Akerman LLP	Dorsey & Whitney LLP	Locke Lord LLP	Reed Smith LLP
Allen & Overy LLP	Drinker Biddle & Reath LLP	MassMutual Life Insurance Company	Richards, Layton & Finger
Alston & Bird LLP	Duane Morris LLP	Marshall, Gerstein & Borun LLP	Robins, Kaplan, Miller & Ciresi LLP
Altria Client Services	Exelon	Mayer Brown LLP	Ropes & Gray LLP
Arnold & Porter LLP	Faegre Baker Daniels LLP	McDermott, Will & Emery LLP	Schiff Hardin LLP
Association of Corporate Counsel	Fannie Mae	McDonnell Boehnen Hulbert & Berghoff LLP	Schulte Roth & Zabel LLP
Baker Botts LLP	Fenwick & West LLP	McGuireWoods LLP	Sedgwick LLP
Baker, Donelson, Bearman, Caldwell & Berkowitz P.C.	Finnegan, Henderson, Farabow, Garrett & Dunner, LLP	Merchant & Gould P.C.	Seyfarth Shaw LLP
Baker & Hostetler LLP	Fish & Richardson, P.C.	MetLife	Sidley Austin LLP
Baker & McKenzie LLP	Foley & Lardner LLP	Microsoft Corporation	Shearman & Sterling
Ballard Spahr LLP	Fox Rothschild LLP	Milbank, Tweed, Hadley & McCloy LLP	Shell Oil Company
Bank of America	Freddie Mac	Morgan, Lewis & Bockius LLP	Sheppard Mullin
Barnes & Thornburg LLP	Frederikson & Byron	Morris, Nichols, Arsht & Tunnell LLP	Shipman & Goodwin LLP
Bass, Berry & Sims PLC	Freshfields Bruckhaus Deringer	Morrison & Foerster LLP	Shook, Hardy & Bacon LLP
Bilzin Sumberg Baena Price & Axelrod LLP	Fried, Frank, Harris, Shriver & Jacobson	Moses & Singer LLP	Simpson, Thacher & Bartlett LLP
Blank Rome LLP	Gibson Dunn & Crutcher LLP	Nationwide Mutual Insurance Company	Skadden, Arps, Slate, Meagher & Flom LLP
BMW	GlaxoSmithKline	Navigant Consulting, Inc.	Squire Patton Boggs US LLP
Bracewell & Giuliani LLP	Goodwin Procter LLP	Neal, Gerber & Eisenberg LLP	Step toe & Johnson LLP
Bricker & Eckler LLP	Greenberg Traurig LLP	New York Life Insurance Company	Stites & Harbison PLLC
Bryan Cave LLP	Haynes and Boone, LLP	Nixon Peabody LLP	Sullivan & Cromwell LLP
Cadwalader, Wickersham & Taft LLP	Hewlett-Packard	Norton Rose Fulbright	Sutherland Asbill & Brennan LLP
Carlton Fields Jordan Burt LLP	Hogan Lovells US LLP	Nossaman LLP	Thompson Coburn LLP
CBS Corporation	Holland & Knight LLP	Novak Druce Connolly Bove + Quigg LLP	Thompson & Knight LLP
Chadbourne & Parke LLP	Hughes Hubbard & Reed LLP	Nutter McClennen & Fish LLP	Thomson Reuters
Chapman and Cutler LLP	Hunton & Williams LLP	Ogletree, Deakins, Nash, Smoak & Stewart, P.C.	Troutman Sanders LLP
Cleary Gottlieb Steen & Hamilton LLP	Husch Blackwell	O'Melveny & Myers LLP	U.S. Securities and Exchange Commission
Clifford Chance US LLP	Irell & Manella	Orrick, Herrington & Sutcliffe LLP	Vinson & Elkins LLP
Cooley LLP	Jenner & Block LLP	Paul, Hastings, Janofsky & Walker LLP	Wachtell, Lipton, Rosen & Katz LLP
Covington & Burling LLP	Jones Day	Paul, Weiss, Rifkind, Wharton & Garrison LLP	Walmart
Cozen O'Connor	Katten Muchin Rosenman LLP	Pepper Hamilton LLP	Weil, Gotshal & Manges LLP
Cravath, Swaine & Moore LLP	Kaye Scholer LLP	Perkins Coie	White & Case LLP
Crowell & Moring LLP	Kilpatrick Townsend	Pillsbury Winthrop Shaw Pittman LLP	Wiley Rein LLP
Davis, Polk & Wardwell LLP	King & Spalding LLP	PNC Financial Services	Willkie Farr & Gallagher LLP
Davis Wright Tremaine	Kirkland & Ellis	Polsinelli PC	WilmerHale LLP
Debevoise & Plimpton LLP	K&L Gates LLP	Potter Anderson & Corroon LLP	Wilson Sonsini Goodrich & Rosati
Dickinson Wright PLLC	Latham & Watkins LLP	Proskauer Rose LLP	Winston & Strawn LLP
Dickstein Shapiro	Liberty Mutual	Prudential Financial	
Dinsmore & Shohl LLP	Linklaters LLP		





**THE LGBT
BAR**

**THE NATIONAL LGBT
BAR ASSOCIATION**

1875 I Street NW
Suite 1100
Washington, DC 20006

Phone: (202) 637-7661

Email: info@lgbtbar.org

Web: <http://lgbtbar.org>